

kuraray

Noritake

CLINICAL CASES

CLEARFIL MAJESTY™ ES-2 Universal



COMPACT, TIME-SAVING AND HIGHLY AESTHETIC

“CLEARFIL MAJESTY™ ES-2” Universal SHADE CONCEPT

How many different shades of composite do you need to create appealing restorations in virtually every clinical situation? If you opt for “CLEARFIL MAJESTY™ ES-2” Universal shade concept, a few shades will do the trick.



1 SHADE FOR POSTERIOR RESTORATIONS

A single universal shade is the go-to solution for all posterior restorations, independent of the colour of the underlying and adjacent tooth structure.



2 SHADES FOR ANTERIOR RESTORATIONS

In the aesthetically more demanding anterior region, there are two shade options to choose from.



NO OPAQUER NEEDED

A blocker or opaquer is not needed – neither in the posterior nor in the anterior region for your regular cases.

2

AESTHETIC
SHADES



ANTERIOR RESTORATION WITH “CLEARFIL MAJESTY™ ES-2” Universal Shades

by Dr. Luca Dusi



Fig. 1. Initial situation with a cone-shaped upper right lateral incisor (tooth 12).



Fig. 2. Image of the initial situation taken with a polarising filter for shade evaluation purposes.



Fig. 3. The new “CLEARFIL MAJESTY™ ES-2” Universal shade concept with only two shades for the anterior region was chosen. It offers a good optical integration thanks to Kuraray Noritake Dental's Light Diffusion Technology.



Fig. 4. Shade determination with the aid of cured samples of “CLEARFIL MAJESTY™ ES-2” Universal Light (UL) on tooth 12 and Universal Dark (UD) on tooth 22.



Fig. 5. Isolation with rubber dam.



Fig. 6. “CLEARFIL™ SE BOND 2” used for the establishment of a strong bond between the tooth structure and the composite material.



Fig. 7. The upper half restored with “CLEARFIL MAJESTY™ ES-2” Universal Dark (UD) and the lower, incisal half with “CLEARFIL MAJESTY™ ES-2” Universal Light (UL). The universal composite blends in well with the adjacent teeth regarding its colour and surface finish.

DIASTEMA CLOSURE WITH A UNIVERSAL COMPOSITE

by Dr. Jusuf Lukarcanin

CLINICAL CASE 1



Fig. 1. Female patient with multiple diastemata asking for a minimally-invasive, aesthetic treatment option.



Fig. 2. Treatment outcome after composite veneering with "CLEARFIL MAJESTY™ ES-2" Universal Light (UL).



Fig. 3. The patient's smile - her teeth have a natural, lighter appearance.

CLINICAL CASE 2



Fig. 1. Young patient with malpositioned maxillary central and lateral incisors.



Fig. 2. Irregularities visible when the patient is smiling. She opted for composite veneering instead of an orthodontic approach.



Fig. 3. Treatment outcome after optical alignment and correction of teeth's shapes using "CLEARFIL MAJESTY™ ES-2" Universal Light (UL).

SIMPLIFIED DIRECT RESTORATION PROCEDURE IN THE LOWER ANTERIOR REGION

by Dr. Adham Elsayed



Fig. 1. Initial situation. Several caries lesions are detected on the lower anterior teeth.

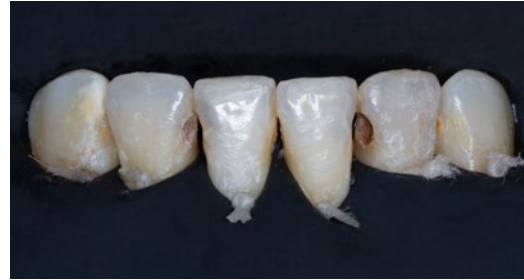


Fig. 2. Situation after placement of rubber dam for moisture control.



Fig. 3. Appearance of the teeth following caries removal.



Fig. 4. Application of "CLEARFIL™ Universal Bond Quick".



Fig. 5. Labial view of the final restorations produced with "CLEARFIL MAJESTY™ ES-2" Universal Dark (UD) before finishing and polishing.



Fig. 6. Final situations after rubber dam removal.

1

SHADE FOR
STRENGTH



POSTERIOR COMPOSITE RESTORATION

by Dr. Adrien Lavenant

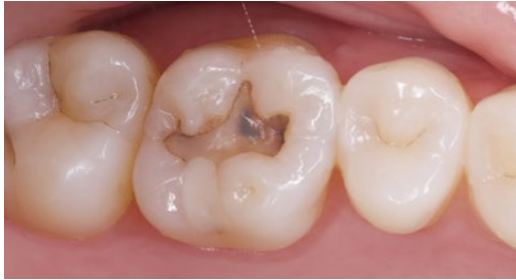


Fig. 1. Initial situation showing an occlusal caries lesion on the maxillary right first molar.



Fig. 2. Pre-operative X-ray.



Fig. 3. Isolation of the working field with rubber dam.



Fig. 4. Situation after caries excavation and tissue preparation.



Fig. 5. Cavity ready for the application of the universal composite: "CLEARFIL™ Universal Bond Quick" is visible on dentin and enamel and the cavity floor is covered by a thin layer of "CLEARFIL MAJESTY™ ES Flow" Low.



Fig. 6. Appearance of the tooth after buildup of the restoration with several layers of "CLEARFIL MAJESTY™ ES-2" Universal (U) (developed for the posterior area).



Fig. 7. Stains applied in the occlusal fissures ensure an even more natural appearance.



Fig. 8. Final result after polishing with TWIST™ DIA for Composite* and checking of the occlusion.



Fig. 9. Final result immediately after rubber dam removal.



Fig. 10. Post-operative X-ray.



Fig. 11. Check-up after 15 days with rehydrated dental tissues.

MESIAL AND OCCLUSAL RESTORATION IN THE SECOND MOLAR



Fig. 1. Initial situation: caries lesions and insufficient restorations are detected on the occlusal surface of the second molar.



Fig. 2. Situation after placement of rubber dam for moisture control.



Fig. 3. Appearance of the teeth following caries removal and placement of sectional matrix.



Fig. 4. Etch-and-Rinse technique (Enamel for 30 sec. and Dentin for 15 sec.).



Fig. 5. Situation after rinsing and drying.



Fig. 6. Appearance of the teeth following application of "CLEARFIL™ Universal Bond Quick".



Fig. 7. Cavity lining with a layer of flowable composite "CLEARFIL MAJESTY™ ES Flow" Low (A2).



Fig. 8. Occlusal view of the final restorations produced with "CLEARFIL MAJESTY™ ES-2" Universal (U).



Fig. 9. Situation after rubber dam removal and occlusal adjustments.



Fig. 10. Follow-up after 7 days.



REPLACEMENT OF A FRACTURED RESTORATION WITH A NEW UNIVERSAL COMPOSITE MATERIAL

by Dr. Max Andrup

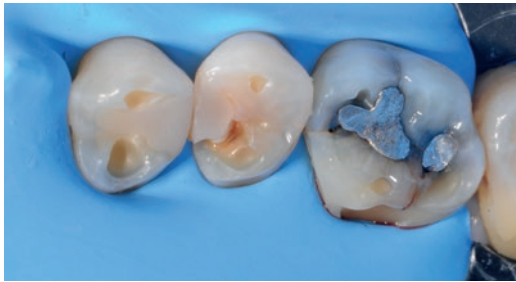


Fig. 1. Pre-operative situation revealing signs of severe erosive tooth wear, a cracked mesial wall of the first molar and a failed filling on the second premolar with recurrent decay.



Fig. 2. Appearance of the tooth after removal of the direct composite restoration. The recurrent caries is obvious.



Fig. 3. Caries Detector applied to the decayed tooth structure.



Fig. 4. Establishing of a peripheral zone totally free of caries with the aid of Caries Detector. It may be useful to apply the dye several times.



Fig. 5. The final situation after several applications of Caries Detector. The peripheral zone is completely free of caries, which is a strict requirement for the establishment of a perfect seal during bonding. Affected caries stained light pink is not removed not to risk going near the pulp.



Fig. 6. Build-up of the proximal wall with "CLEARFIL MAJESTY™ ES-2" Universal (U) after the application of "CLEARFIL™ SE Protect" and a small layer of "CLEARFIL MAJESTY™ ES Flow" in a thickness of about 0,5 mm. By focusing on the proximal wall connecting to enamel first, the hybrid layer is given the time needed to mature. According to Dr. Andrup, not putting a new increment on top of the hybrid layer for the first five minutes will lead to an increased bond strength to dentin.



Fig. 7. Appearance of the tooth immediately after finishing and polishing. Although the rubber dam is still in place and the tooth structure is not yet rehydrated, it is evident that the composite blends in very well with the remaining tooth structure to form a seamless margin.

SIMPLIFIED POSTERIOR RESTORATION PROCEDURE ELIMINATING SHADE SELECTION

by Dr. Piotr Marchewka

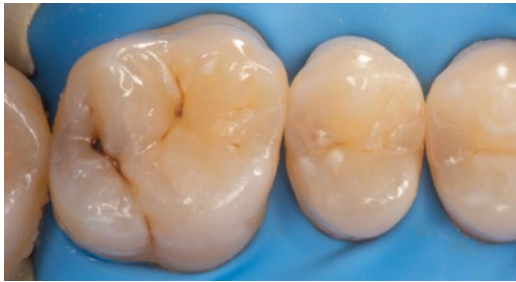


Fig. 1. Initial situation. Caries lesions are detected on the occlusal and palatal surfaces of the first molar, and in the distal aspect of the second premolar. Rubber dam was placed for moisture control.



Fig. 2. Appearance of the teeth following caries removal, selective etching of the enamel, and application of "CLEARFIL™ SE BOND 2".



Fig. 3. Sectional matrix in place. It is used to facilitate the creation of a proper interproximal contact.



Fig. 4. Occlusal view of the final restorations produced with "CLEARFIL MAJESTY™ ES-2" Universal (U).



Fig. 5. Mesio-occlusal view of the final restorations. The surfaces were polished with Kuraray Noritake Dental's polishing discs.



Fig. 6. Disto-occlusal view of the restored teeth.



Fig. 7. Palato-occlusal view of the final restorations.



Fig. 8. Final situations after rubber dam removal and occlusal adjustments.

TREATMENT OF A CARIOUS LESION WITH A SINGLE-POSTERIOR-SHADE COMPOSITE

by Dr. Nicola Scotti



Fig. 1. Initial situation with a wide primary carious lesion in the distal aspect of the second premolar.



Fig. 2. Premolar after isolation of the working field with rubber dam, caries excavation and cavity preparation.



Fig. 3. Placement of a sectional matrix and a wedge to optimize the fit. Both are held in place with a separation ring, which increases the interproximal space and hence ensures tight, anatomically correct proximal contacts.



Fig. 4. Build-up of the proximal wall with "CLEARFIL MAJESTY™ ES-2" Universal (U) following selective enamel etching with phosphoric acid (K-ETCHANT Syringe) and bonding with "CLEARFIL™ SE BOND".

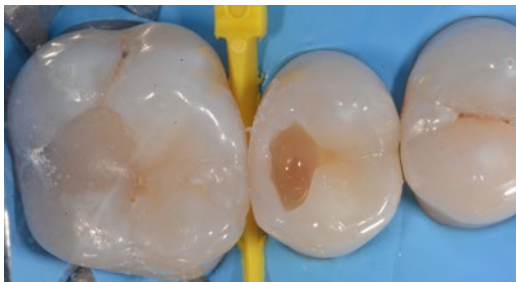


Fig. 5. A thin layer of flowable composite ("CLEARFIL MAJESTY™ ES Flow" High) applied to the cavity floor to act as a resin coat.



Fig. 6. Restoration completed with "CLEARFIL MAJESTY™ ES-2" Universal (U). While the universal-shade composite blends in very well with the surrounding tooth structure, the natural look is completed by adding a tiny bit of brown tint to the fissure.



Fig. 7. Treatment outcome immediately after rubber dam removal. The proximal contact is tight and the occlusal anatomy well-shaped for the patient's individual masticatory dynamics. The margin of the restoration is virtually invisible, while the buccal cusp appears lighter due to dehydration of the natural tooth structure.



Fig. 8. Treatment outcome after two months.

QUADRANT RESTORATION WITH A SINGLE-SHADE COMPOSITE

by Dr. Vincenzo Picciariello



Fig. 1. Pre-operative image.



Fig. 2. Isolation of the working field with rubber dam.



Fig. 3. Secondary caries visible after removal of the amalgam restorations.



Fig. 4. Completed cavity preparation with air-abraded bonding surfaces.



Fig. 5. Wedges, sectional matrices and rings placed for build-up of the first molar's proximal walls.



Fig. 6. Image taken immediately after polishing with dehydrated enamel and the rubber dam still in place.



Fig. 7. Picture of the treatment outcome taken after 30 days.

COMBINING AESTHETICS AND SIMPLICITY

As an aesthetically driven and user-oriented company, Kuraray Noritake Dental aims at offering products that support simplified treatment approaches while ensuring highly aesthetic outcomes. In line with this philosophy, "CLEARFIL MAJESTY™ ES-2" Universal shade concept is comprised of the smallest possible shade range required for each region to support high-level aesthetics.

For all posterior restorations

Universal (U)

For all anterior restorations

Universal Light (UL)

Universal Dark (UD)

A1	A2	A3	A3.5	A4
B1, B2	D2, C1	C2, D3	B3, B4	C3, C4

For clinical cases in the anterior region that require high lightness/value, we offer a dedicated white shade (UW).

PRODUCT ASSORTMENT

CLEARFIL MAJESTY™ ES-2 Universal SYRINGES

- #3181-EU CLEARFIL MAJESTY™ ES-2 Universal (U)
- #3183-EU CLEARFIL MAJESTY™ ES-2 Universal Light (UL)
- #3184-EU CLEARFIL MAJESTY™ ES-2 Universal Dark (UD)
- #3182-EU CLEARFIL MAJESTY™ ES-2 Universal White (UW)



CLEARFIL MAJESTY™ ES-2 Universal PLT

- #3191-EU CLEARFIL MAJESTY™ ES-2 Universal (U)
- #3193-EU CLEARFIL MAJESTY™ ES-2 Universal Light (UL)
- #3194-EU CLEARFIL MAJESTY™ ES-2 Universal Dark (UD)
- #3192-EU CLEARFIL MAJESTY™ ES-2 Universal White (UW)



EU Importer
Kuraray Europe GmbH
Philipp-Reis-Strasse 4,
65795 Hattersheim am Main, Germany
Phone +49 (0)69 305 35 835
Fax +49 (0)69 305 98 35 835
www.kuraraynoritake.eu
centralmarketing@kuraray.com

- Before using this product, be sure to read the Instructions for Use supplied with the product.
- The specifications and appearance of the product are subject to change without notice.
- Printed color can be slightly different from actual color.

"CLEARFIL" and "CLEARFIL MAJESTY" are registered trademarks of KURARAY CO., LTD.



Kuraray Noritake Dental Inc.
1621 Sakazu, Kurashiki, Okayama 710-0801, Japan
Website www.kuraraynoritake.com

