

UNIVERSAL DUO-SHADE NANO COMPOSITE



BRILLIANT™NG
simply natural

MADE IN SWITZERLAND

 **COLTENE**



BRILLIANT™ NG

simply natural

Excellent Aesthetics – Simple Technique

BRILLIANT NG is a universal composite aimed at simplifying the technique of application, achieving excellent aesthetic results. Its pre-polymerised particle filling, in addition to high nanometric particle content, produce optimum consistency for manipulation and modelling along with a noticeable decrease in shrinkage and easily achievable high gloss surfaces. Its Duo Shade system allows it to obtain two shades from the same syringe, simplifying the selection of colour and inventory of syringes.

- Easy to model, non-sticky consistency
- Insensitive to surgical lighting
- Quickly and easily polished
- Natural fluorescence
- Reduces shrinkage due to pre-polymerised particles
- Simplicity in choice of colour

Nano-Hybrid Universal Composite

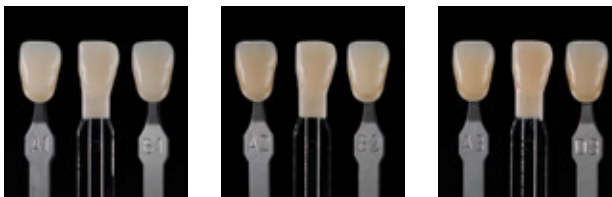
Owing to its optimized particle distribution, BRILLIANT NG is indicated both for the anterior region with its high aesthetic demands such as polish and finish and for the posterior region with its extraordinary resistance to the forces of chewing and abrasion. Indications: direct, semidirect and indirect restorations (veneers or inlays).

Enamel and Dentine Shade Natural Layering Technique

Both shades mimic the colour, opacity and fluorescence of natural tissues. Applied in two layers (dentine and enamel), they imitate the tooth's internal structure and ensure lasting natural aesthetics.

DUO SHADE CONCEPT TWO VITA* SHADES PER SYRINGE

Exclusive system, which due to its revolutionary matrix with Optimized Light Refractive Index (OLRI), increases the ability to mimic natural tooth colour. This «Chameleon Effect» improves the final aesthetic result and facilitates the right choice of colour. Wide range of shades with fewer syringes.



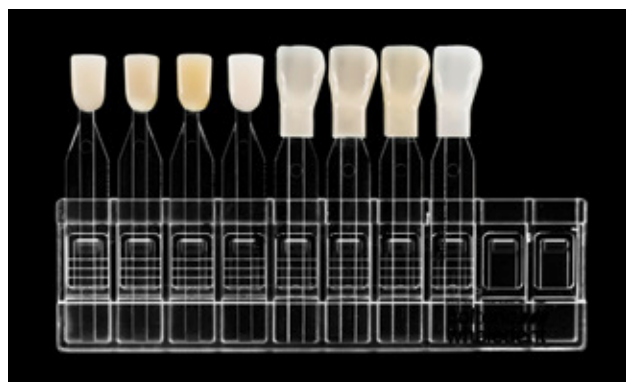
Duo Shade effect check. BRILLIANT NG Shade Guide versus Vita* guide, A1/B1, A2/B2 and A3/D3.

* Not a Registered Trademark of Coltène/Whaledent

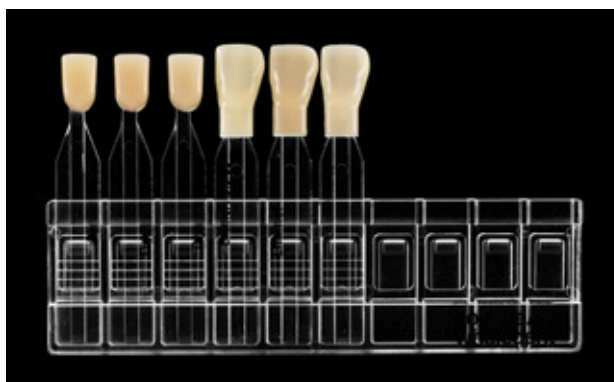
UNIQUE SHADE GUIDE

Especially manufactured with BRILLIANT NG composite to ensure the colour chosen matches the final restoration. Dentines shaped like «nucleus» and enamels shaped like

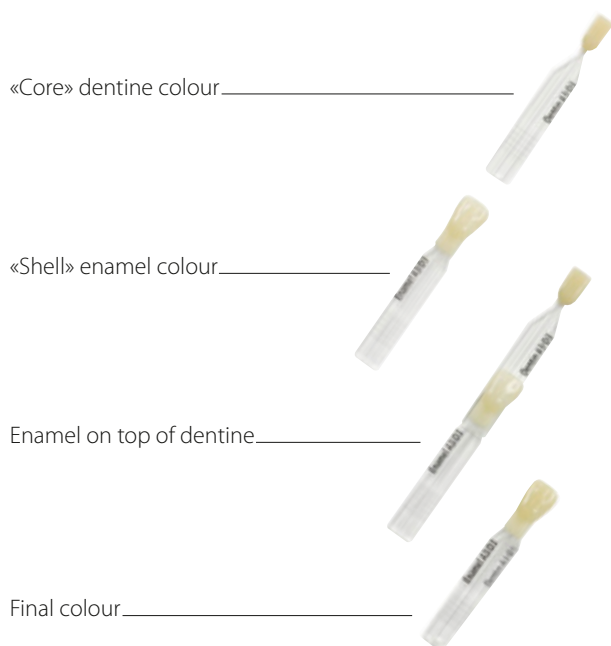
«veneers» which simulate natural tissue anatomy, to be blended and obtain a natural effect of colour, translucency and opacity.



1, 8 shade Shade Guide:
A1/B1, A2/B2, A3/D3 dentines, Bleach
A1/B1, A2/B2, A3/D3 enamels, Bleach



2, 6 shade Shade Guide:
A3.5/B3, A4/C4 and C2/C3 dentines
A3.5/B3, A4/C4 and C2/C3 enamels



Additional effects: Bleach and Transparent

Enamel Bleach, Dentine Bleach and Transparent shades are available for even better aesthetic results in special cases requiring extreme whites or additional transparency.

IDEAL CHARACTERISTICS

Natural Fluorescence

The shades Dentine and Enamel provide different fluorescent characteristics based on the natural fluorescence of tissues to guarantee perfect aesthetics even under fluorescent or ultra-violet light.

Outstanding Handling Characteristics

The inclusion of nano-particles and pre-polymerised particles achieves an optimum particle size distribution. This is

what makes BRILLIANT NG a product which is easy to manipulate and model, and which is not sticky.

Quickly and Easily Polished and Finished

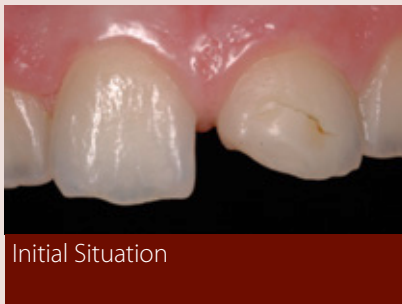
Polishing and finishing BRILLIANT NG is easy and needs less clinical time. It brings extraordinary results to shine and durability.

Specifications

Flexural Modulus	9,000 MPa	Volumetric contraction	2.2 %
Flexural strength	128 MPa	Compressive strength	383 MPa
Water absorption	19 µg/mm ³	Particle size interval	0.02–2.5 µm
Water solubility	0.6 µg/mm ³	Average size of filling particles	0.6 µm
Radioopacity	2 mm Al	Filler content by weight	80 %
Abrasion index	2.58	Filler content by volume	65 %
Vickers hardness	76 kg/mm ²		

Source: Internal data

CLINICAL CASE*



* Prof. Guillermo P. Depino, Faculty of Dentistry, Buenos Aires University

EXPERT VIEW

«In BRILLIANT NG, Coltène/Whaledent brings us a new resin which exceeds expectations in modelling, colour, polish and ease of use.»

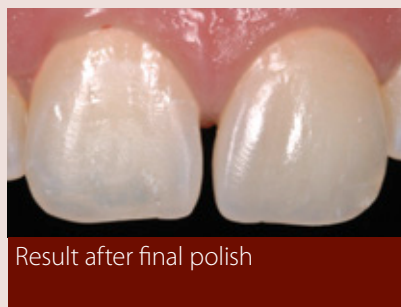
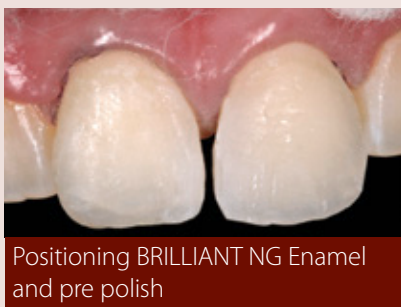
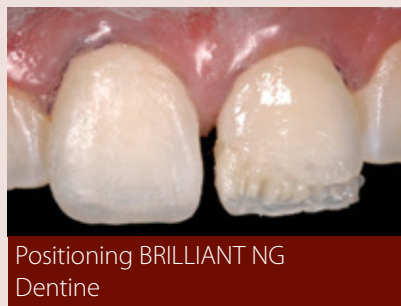
Prof. Enrique Kogan - Universidad Tecnológica, Mexico City, Mexico

«COLOURS. A great variety of dentins to quickly obtain aesthetic characteristics, and which makes it easy to choose the enamel. Outstanding aesthetic result. HANDLING. This is its key characteristic, it adapts to the surface being restored, maintaining its viscosity and facilitating packing with any instrument. POLISH AND FINISH. Excellent polishability in few steps. Brilliant surfaces that blend in with the adjacent dental substrate.»

Prof. Isauro Abril – Universidad Nacional de Colombia, Bogota, Colombia

«BRILLIANT NG is an excellent alternative which simplifies colour selection with the Duo Shade system: great variety in a case for the best aesthetic results. The changes to its formulation turn it into a material which is easy to manipulate and with improved benefits as to polish, shine and finish; making for a really natural restoration. Due to all these characteristics I use it with complete confidence in my dental practice.»

Prof. Jorge Isaza - Universidad del Bosque, Bogota, Colombia



BRILLIANT FLOW

New BRILLIANT Flow available!

The new Coltène/Whaledent BRILLIANT Flow is a nano-filled radioopaque composite fluid, based on a successful, clinically proven technology. It is a stable material which flows generously under pressure – great thixotropic properties – to assure easy handling and precise application.



Shade adjustment

Just like BRILLIANT NG, BRILLIANT Flow is based on the Duo Shade concept which enables easy colour selection and the best aesthetic results, guaranteed by its outstanding «Chameleon Effect» with natural teeth.



Pre-operative view



BRILLIANT Flow application



Final restoration

Source: Internal data

ONE COAT BOND SL: JUST ONE DROP – JUST ONE COAT

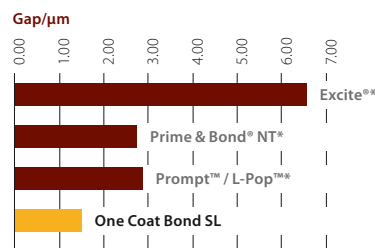
A powerful adhesive for dentine and enamel

The hydrophilic nature of One Coat Bond SL guarantees good penetration into collagen fibres and dentine tubules along with reliable moistening of dental surfaces

- Without volatile solvents (compatible with water)
- Only one coat of adhesive – homogenous surface
- Simple technique: Works perfectly on Dry, Humid or Wet surfaces.
- More applications: concentrated adhesive without solvent, just one coat, controlled application.

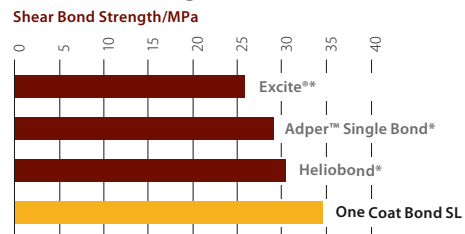


Development of microfissures in class V cavity axial walls



Source: Prof. J. C. Gomes, Universidade Estadual de Ponta Grossa, Ponta Grossa, Parana, Brazil

Adhesive strength on dentine



Source: Prof. Marcelo C. Chain, Universidade Federal de Santa Catarina Faculty of Dental Materials, Florianapolis, Brazil

* Other manufacturers' registered trademarks

ETCHANT GEL S

Phosphoric acid 35%

- Precise application
- Uniform consistency
- Easy removal from surface



ORDERING INFORMATION

8950 NG BRILLIANT NG Intro Kit

6 syringes = 12 Vita™ shades
 BRILLIANT NG Dentine:
 A1/B1, A2/B2, A3/D3 3×4g
 BRILLIANT NG Enamel:
 A1/B1, A2/B2, A3/D3 3×4g
 ONE COAT BOND SL 1×5 ml
 ETCHANT GEL S 1×2.5 ml
 BRILLIANT NG 1 Shade Guide
 Accessories

8979 NG BRILLIANT NG Intro Kit (without Shade Guide)

6 syringes = 12 Vita™ shades
 BRILLIANT NG Dentine:
 A1/B1, A2/B2, A3/D3 3×4g
 BRILLIANT NG Enamel:
 A1/B1, A2/B2, A3/D3 3×4g
 ONE COAT BOND SL 1×5 ml
 ETCHANT GEL S 1×2.5 ml
 Accessories

Refills (1 × 4g)

- 8951 NG Dentine A1/B1
- 8952 NG Dentine A2/B2
- 8953 NG Dentine A3/D3
- 8954 NG Dentine A3.5/B3
- 8955 NG Dentine A4/C4
- 8956 NG Dentine C2/C3
- 8957 NG Dentine Bleach

- 8960 NG Enamel A1/B1
- 8961 NG Enamel A2/B2
- 8962 NG Enamel A3/D3
- 8963 NG Enamel A3.5/B3
- 8976 NG Enamel A4/C4
- 8964 NG Enamel C2/C3
- 8974 NG Enamel Bleach

- 8968 NG Transparent

Accessories

8987 NG BRILLIANT NG Shade Guide

Dentine colours: Bleach, A1/B1, A2/B2, A3/D3, A3.5/B3, A4/CA, C2/C3;
 Enamel colours: Bleach, A1/B1, A2/B2, A3/D3, A3.5/B3, A4/CA, C2/C3

8989 NG BRILLIANT NG 1 Shade Guide

Dentine colours: Bleach, A1/B1, A2/B2, A3/D3;
 Enamel colours: Bleach, A1/B1, A2/B2, A3/D3;

8988 NG BRILLIANT NG 2 Shade Guide

Dentine colours: A3.5/B3, A4/CA, C2/C3;
 Enamel colours: A3.5/B3, A4/CA, C2/C3

- 7430 One Coat Bond SL (1 × 5 ml)
- 7634 Black microbrush (50 units)
- 7373 Etchant Gel S (2 × 2.5 ml)
- 7876 Etchant application needles (20 units)

BRILLIANT Flow refills (1 syringe 2.3g)

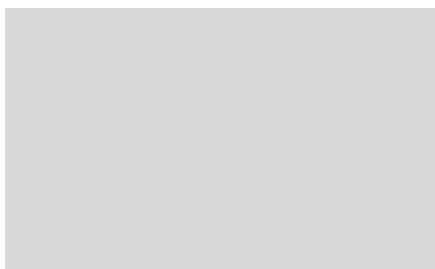
- 7100 Colour A1/B1
- 7101 Colour A2/B2
- 7102 Colour A3/D3
- 7103 Colour A3.5/B3
- 7104 Colour A4/M5
- 7105 Super White
- 7106 Transparent

- 8469 Curved application needles, 20 pcs.





© 2014 Coltène/Whaledent AG – www.coltene.com



Coltène/Whaledent AG
Feldwiesenstrasse 20
9450 Altstätten/Switzerland
Tel. +41 (0)71 757 53 00
Fax +41 (0)71 757 53 01
info.ch@coltene.com

Coltène/Whaledent Inc.
235 Ascot Parkway
Cuyahoga Falls, Ohio 44223/USA
Tel. +1 330 916 8800
Fax +1 330 916 7077
info.us@coltene.com

 **COLTENE**