



roeko
Stay-put



roeko
Comprecord



Perfect® TCS II
Tissue Contouring System



AFFINIS® PRECIOUS



**Magic
FoamCord**®



roeko
Retracto

Comprecap
anatomic



Many roads lead to a perfect impression...

with the Gingiva Management System from Coltène/Whaledent

The **Gingiva Management System**

lays the foundation for esthetically perfect and long lasting restorative work and prosthetics. Different prosthetic and restorative techniques and different tissue conditions require varying methods. These include:

- › the mechanical retraction of the tissue, usually done with a retraction cord and
- › Electrosurgery

Good preparation work is the basis for an exact impression, which in turn is a prerequisite for perfect results from the dental technician.

The Gingiva Management System from Coltène/Whaledent provides an ideal solution for every indication:

- › Electrosurgery
- › Retraction cords
- › Retraction Cord Packer
- › Gingiva Liquid
- › Magic FoamCord®
- › Comprecap/Comprecap anatomic

Electrosurgery

an easy and effective way of tissue contouring.

Indication for the use of electrosurgery:

- › aesthetic contouring of gingiva
- › subgingival access and visibility of margins
- › bleeding control before impression taking
- › widening gingival sulcus
- › exposing impacted teeth

Electrosurgery helps you manage soft tissue with greater efficiency. The result is a clean, dry and highly visible operative field. The use of electrosurgery allows an uneventful healing and reduces chair time, as impression taking may be done during the same appointment.

Advantages:

- › immediate haemostasis - the electrode coagulates as it cuts
- › uneventful, painless healing
- › minimal trauma of the gingiva

whaledent®

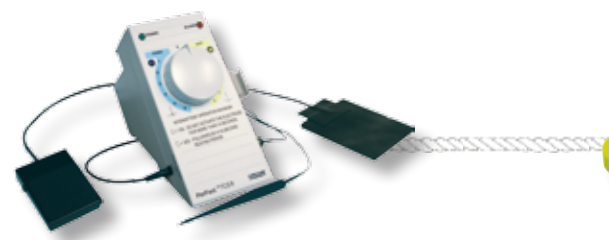
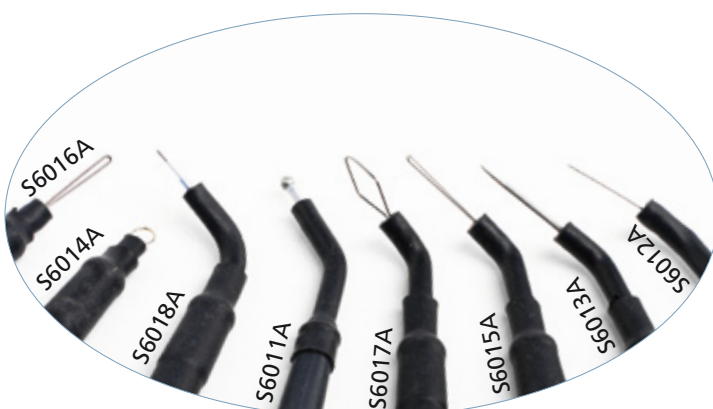
PerFect® TCS II

Tissue Contouring System

The PerFect® TCS II product line comprises a full range of electrode sheaths for all indications. The following 8 sterilizable electrode sheaths are available

- › Coag Ball
- › 45° Straight Knife
- › 45° Tapered Knife
- › Straight Round Loop
- › 45° Long Loop
- › Straight Long Loop
- › 45° Diamond Loop
- › 90° AP 1½

PerFect® TCS II has a coagulation and a cutting mode. Its compact design and easy handling properties are compelling features.



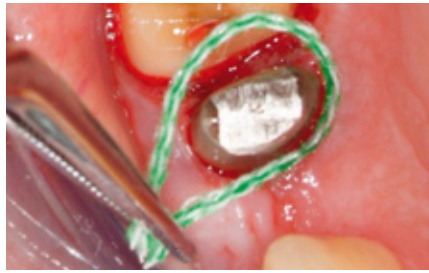
roeko Stay-put impregnated

Stay-put impregnated combines the advantages of an impregnated retraction cord with the adaptability of a fine metal filament.

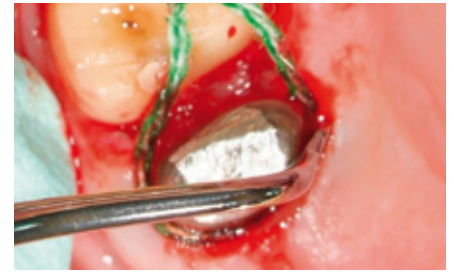
Stay-put impregnated:

- > ensures quick haemostasis
- > can be pre-shaped
- > is pliable and adaptable
- > shows good contrast to the gingiva
- > is impregnated with aluminium chloride, causing no cardiovascular problems

Stay-put non impregnated is also available and can be impregnated individually as required.



Place the center of the cord into the sulcus



Then work out towards the ends of the cord, packing it into the sulcus



Leave Stay-put impregnated for 1-3 minutes in the sulcus



Result: a wide open sulcus



Original situation: closed sulcus



Press Comprecord carefully into the sulcus by means of a retraction cord packer



Leave the non impregnated cord for at least 5 minutes in the sulcus



Remove Comprecord.
The sulcus is now wide open and ready for taking the impression

roeko Retracto

Retracto is available braided or twisted in impregnated (with aluminium chloride hexahydrate) and non impregnated versions.

roeko Retraction Cord Packers

Double ended, stainless steel instruments facilitate placing of retraction cord around the tooth.

roeko Gingiva Liquid

An astringent, styptic solution with 10% aluminium chloride hexahydrate for the impregnation of retraction cords.

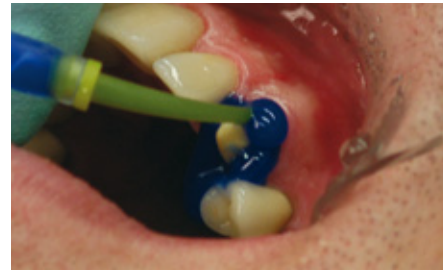




Crown preparation prior to retraction



Pre-fit one Comprecap anatomic per crown preparation



Apply Magic FoamCord® around the preparation



Place Comprecap anatomic and have the patient bite and maintain pressure on it



Easy removal of Comprecap anatomic with Magic FoamCord® in one piece after 5 min



The result is a wide open sulcus with clear access to the prepared margins

Comprecap anatomic

Anatomically formed compression caps with semicircled shaped spaces on two opposite sides and can therefore be easily placed on adjacent teeth:

- › stop bleeding naturally – by compression
- › open the sulcus wide
- › ensure a dry, clean area and a well defined gingival margin
- › have a flat base which provides an optimum bite surface for the patient
- › give enough stability to exert pressure onto gingiva and retraction

Magic FoamCord®



5 min

The material is completely cured after 5 min and has a total expansion of 160 %.

First expanding PVS material designed for easy and fast retraction of the sulcus without the potentially traumatic and time consuming packing of retraction cords.

- › widens the sulcus without invasive materials or techniques
- › non-traumatic method of temporary gingival retraction
- › easy and fast application directly to the sulcus without pressure or packing
- › comfortable to the patient
- › no haemostatic chemicals to contaminate the impression site – no need for extensive rinsing
- › outstanding retraction for perfect impressions





Order Information:

PerFect® TCS II Unit

- 1 × PerFect® TCS II Tissue Contouring System Unit
- 3 × Sterilizable electrode sheaths (S7010A)
- 1 × Cord assembly (S6008A or S6008CE)
- 1 × Handpiece holder (S7001)
- 1 × Foot switch (S5005)
- 1 × Dispersive electrode and cable assembly (S204 or S204CE)
- 1 × Clinical instructions video
- 1 × Owner's guide

Models

110 V	REF S8100
115 V	S8115
230 V CE	S8230 CE
230 V CE UK	S8230 UK
240 V	S8240

Accessories

Dispersive Electrode and Cable	REF S204 CE
Foot switch assembly	S5005
Cord assembly (BNC connector)	S6008A CE
Handpiece holder	S7001

Electrode sheaths sterilizable

Complete set with 8 electrode sheaths	REF S6010A
Set with 3 electrode sheaths	
S6011A, S6012A, S6015A	S7010A
2 × Coag ball electrode sheaths	S6011A
2 × 45° Straight knife electrode sheaths	S6012A
2 × 45° Tapered knife electrode sheaths	S6013A
2 × Straight round loop electrode sheaths	S6014A
2 × 45° Long loop electrode sheaths	S6015A
2 × Straight long loop electrode sheaths	S6016A
2 × 45° Diamond loop electrode sheaths	S6017A
2 × 90° AP 1½ electrode sheaths	S6018A

Stay-put Non impregnated

x-fine	183 cm	REF 521 000
fine	183 cm	521 001
medium	183 cm	521 002
thick	183 cm	521 003

Stay-put Impregnated

x-fine	183 cm	521 020
fine	183 cm	521 021
medium	183 cm	521 022
thick	183 cm	521 023

Comprecord

x-fine	225 cm	515 000
fine	225 cm	515 001
medium	225 cm	515 002
thick	225 cm	515 003

Retracto Braided Impregnated

fine	225 cm	510 001
medium	225 cm	510 002
thick	225 cm	510 003

Retracto Braided Non impregnated

x-fine	225 cm	511 000
fine	225 cm	511 001
medium	225 cm	511 002
thick	225 cm	511 003

Retracto Twisted Impregnated

fine	225 cm	522 001
medium	225 cm	522 002
thick	225 cm	522 003

Retracto Twisted Non Impregnated

x-fine	225 cm	523 000
fine	225 cm	523 001
medium	225 cm	523 002
thick	225 cm	523 003



Retraction Cord Packer

smooth 1 pc.
serrated 1 pc.

Gingiva Liquid

10 ml

Magic FoamCord®

Intro Kit

2 x 50 ml Cartridges
30 x Mixing Tips Yellow
30 x Oral Tips Yellow
45 x Comprecap anatomic

Refill

2 x 50 ml Cartridges

Accessories

Mixing Tips Yellow
Oral Tips Yellow

REF

520 000
520 001

524 000

6735

6737

6550
6555

Comprecap anatomic

Set 1/3/5 120 pcs.

Single Sizes

1 120 pcs. 531 201
3 120 pcs. 531 203
5 60 pcs. 531 205

Comprecap

Set 1/3/5 150 pcs. 530 000

Single Sizes

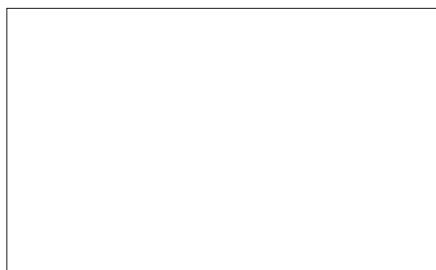
1 120 pcs. 530 008
1 600 pcs. 531 008
3 120 pcs. 530 010
3 600 pcs. 531 010
5 60 pcs. 530 014
5 400 pcs. 531 014



To ensure that treatment continues smoothly the AFFINIS® family provides excellent materials for precise impressions.

Please contact us for more information or visit our website: www.coltenewhaledent.com

www.coltenewhaledent.com
© 2010 Coltène/Whaledent GmbH + Co. KG



Coltène/Whaledent GmbH + Co. KG

Raiffeisenstrasse 30
89129 Langenau/Germany
Tel. +49 (0)7345 805 0
Fax +49 (0)7345 805 201
info@coltenewhaledent.de

Coltène/Whaledent Inc.

235 Ascot Parkway
Cuyahoga Falls, Ohio 44223/USA
Tel. +1 330 916 8800
Fax +1 330 916 7077
info@coltenewhaledent.com

Coltène/Whaledent AG

Feldwiesenstrasse 20
9450 Altstätten/Switzerland
Tel. +41 (0)71 757 53 00
Fax +41 (0)71 757 53 01
info@coltenewhaledent.ch

Coltène/Whaledent Ltd.

The President Suite-A
Kendal House, Burgess Hill
Victoria Way
West Sussex, RH15 9NF/U.K.
Tel. +44 (0)1444 235486
Fax +44 (0)1444 870640
info@coltenewhaledent.co.uk

