

DUAL CURING RESIN CEMENT



DuoCem[®]

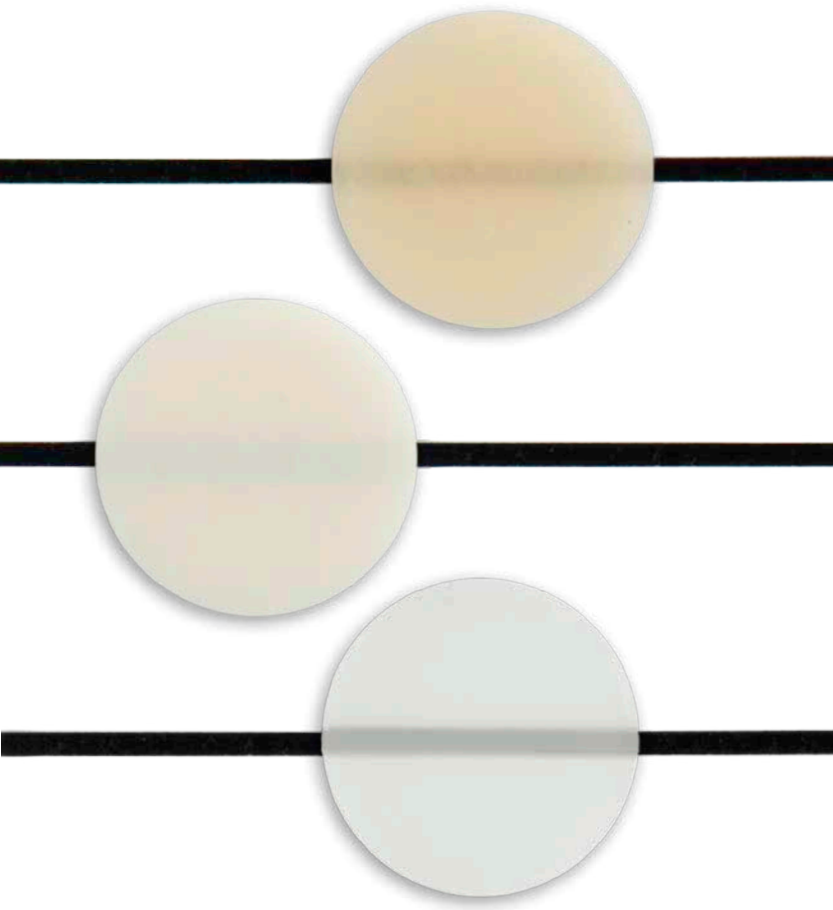
Strong and long lasting cementation

 **COLTENE**



DuoCem[®] Coltène cements have been proving their worth for many years, convincing dentists the world over. DuoCem thus builds on the strengths of these recognised brands, combining them with the benefits of an automix syringe. This combination results in an all-purpose resin cement that offers excellent technical characteristics and can be applied with ease. Thus making DuoCem the ideal cement for routine bonding tasks in the dental practice.

- strong adhesion and properties similar to composites
- all-purpose material for a variety of indications
- convenient flow properties and ideal processing times
- easy removal of excess material



Excellent results thanks to proven applications

Excellent technical characteristics are provided by DuoCem in combination with the well-known adhesive systems from COLTENE. For opaque materials, chemical adhesives, for example such as ParaBond or ONE COAT 7 UNIVERSAL, should be used in combination with One Coat 7.0 Activator. For transparent materials, conventional light-curing adhesive systems, for example from the ONE COAT range, can be used. Subsequent application of DuoCem also couldn't be easier thanks to:

- Optimised flow properties
- Automix syringe and ready-to-use mixing tips
- Intraoral processing time of approx. 60 seconds
- Easy removal of excess material (after light curing for 3 seconds)

Indications

DuoCem can be used for a wide variety of indications and supports you in your work with strong adhesion and easy handling. You can count on DuoCem for the permanent cementation of:

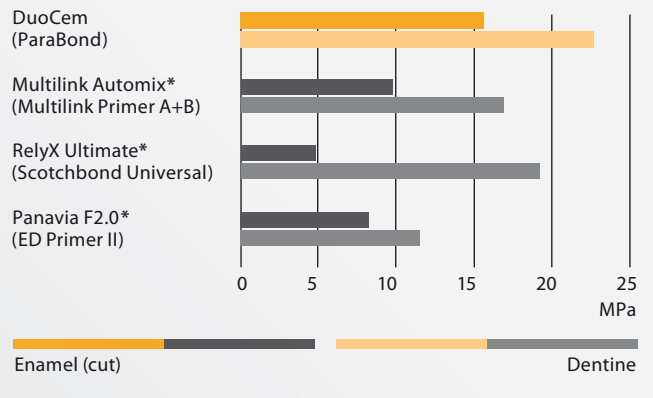
- Crowns (ceramic, metal, composite)
- Bridges (ceramic, metal, composite)
- Inlays (ceramic, metal, composite)
- Onlays (ceramic, metal, composite)
- Root posts of all types

This bond will last

The main function of any cement is to bond different materials securely together.

Be it dual-cured, with light ...

Shear bond strength as defined by Watanabe (dual cured)



Source: internal data

The longevity of a restoration is determined by a variety of factors. Low water sorption ensures stability ...

Water sorption



Source: internal data/ISO 4049

Technical data

- DuoCem complies with **ISO 4049**
- Film thickness **15.7 µm**
- Shrinkage according to Watts **3.4 %**
- Water solubility **1.0 µg/mm³**
- Radio opacity **2 mm Al/mm**

Composition

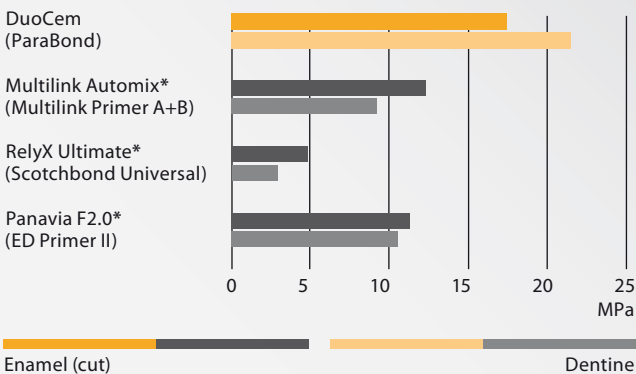
- Methacrylates
- Dental glass
- Zinc oxide
- Amorphous silica

Storage



... or cured only chemically, in areas not exposed to light – DuoCem supports excellent adhesion on both dentine and enamel.

Shear bond strength as defined by Watanabe (chemically cured)



Source: internal data

... and efficient mechanical characteristics guarantee high material durability in the mouth.

Flexural strength (dual cured)



Source: internal data/ISO 4049

Clinical times

Processing time

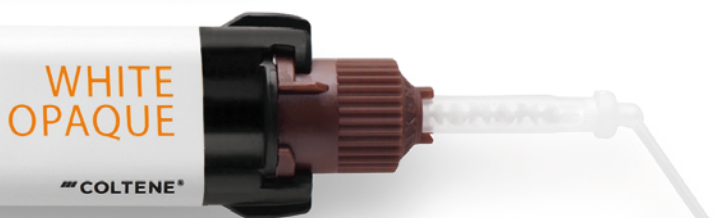
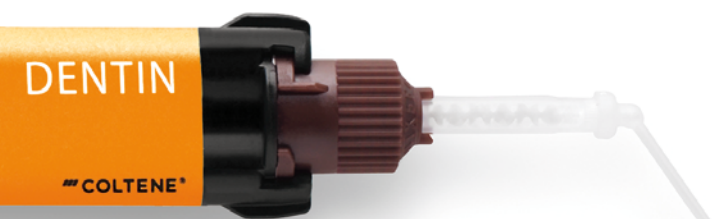
23°C ≤ 120 seconds

37°C ≤ 60 seconds

Curing time (not including processing time)

37°C ≥ 150 seconds

* Not a registered trademark of Coltène/Whaledent



Order information

60014381

1 × 5 ml
1 × 5 ml
10 ×
10 ×

DuoCem Intro Kit

DuoCem Dentin
DuoCem Trans
Mixing Tip Short Fine
Mixing Tip Short Super Fine

6747

40 ×

Mixing Tip Short Super Fine

Mixing Tip, Ø 1 mm

60014382

1 × 5 ml
5 ×
5 ×

DuoCem Refill Dentin

DuoCem Dentin
Mixing Tip Short Fine
Mixing Tip Short Super Fine

60014383

1 × 5 ml
5 ×
5 ×

DuoCem Refill White Opaque

DuoCem White Opaque
Mixing Tip Short Fine
Mixing Tip Short Super Fine

60020092

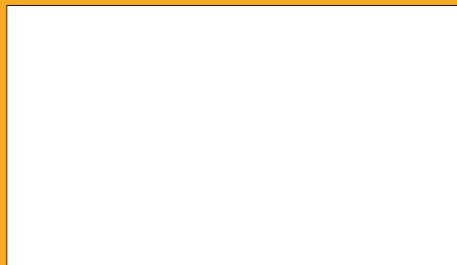
1 × 5 ml
5 ×
5 ×

DuoCem Refill Trans

DuoCem Trans
Mixing Tip Short Fine
Mixing Tip Short Super Fine



© 2017 Coltène/Whaledent AG – www.coltene.com



Coltène/Whaledent Ltd.
The President Suite
Kendal House, Victoria Way
Burgess Hill, West Sussex
RH15 9NF / UK
T +44 1444 235486
F +44 1444 870640
info.uk@coltene.com

Coltène/Whaledent AG
Feldwiesenstr. 20
9450 Altstätten/Switzerland
T + 41 71 757 53 00
F + 41 71 757 53 01
info.ch@coltene.com

Coltène/Whaledent Inc.
235 Ascot Parkway
Cuyahoga Falls, Ohio 44223/USA
T + 1 330 916 8800
F + 1 330 916 7077
info.us@coltene.com

 **COLTENE**