

# ceram.x<sup>®</sup> duo Universal Nano-Ceramic Restorative

with  
**SphereTEC™**  
Filler Technology

Easy high-end esthetics just got easier

**ceram.x<sup>®</sup> duo** universal nano-ceramic composite replicates the translucency and chroma of natural teeth. The system combines just four dentin shades and three enamel shades using simple recipes to cover the entire 16-shade VITA<sup>®1</sup> range and deliver natural, high-end esthetic results. Now with new and novel **SphereTEC™ filler technology** for enhanced handling properties, easy high-end esthetics just got easier.

## .xcellent esthetics made easy

Ingenious simple shading system: 4 dentin and 3 enamel shades to cover the full VITA<sup>®1</sup> shade range.

### Shade guide

VITA <sup>®1</sup> Shade	A1	A2	A3	A3.5	A4	B1	B2	B3	B4	C1	C2	C3	C4	D2	D3	D4
Dentin Shade	D1	D2	D3	D3	D4	D1	D2	D3	D3	D2	D3	D3	D4	D2	D3	D3
Enamel Shade	E2	E2	E2	E3	E3	E1	E1	E3	E3	E2	E1	E2	E2	E2	E2	E1



Shade recipes are consistent with original Ceram-X<sup>®</sup> Duo<sup>2</sup>

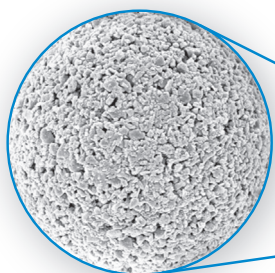
Shade match at the cervical area → 4 dentin shades

Shade match at the incisal area → 3 enamel shades

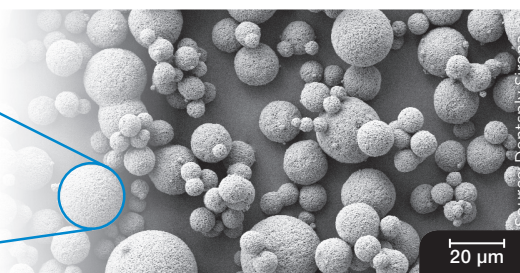
A bleach dentin shade (DB) is also available.

## .xceptional handling

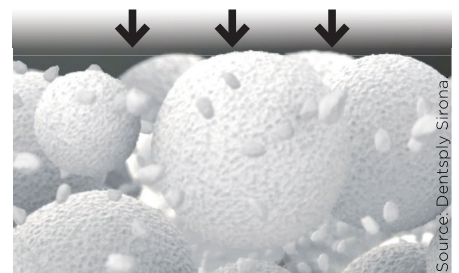
**ceram.x<sup>®</sup> duo** is based on the advanced granulated filler technology SphereTEC™ which is patent applied. SphereTEC™ stands for the process of manufacturing microscaled, well-defined spherical superstructures, comprising of submicron glass. The SphereTEC™ fillers' morphology, particle size distribution and surface microstructure are key for the enhanced handling comfort and esthetic outcome.



Microstructured surface of a SphereTEC™ filler ( $d_{3,50} = 15 \mu\text{m}$ ), obtained via spray-granulation process from submicron glass fillers.

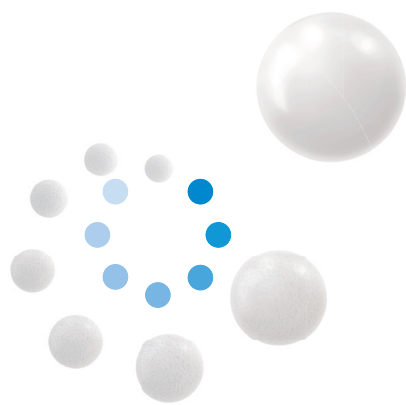


SEM picture showing SphereTEC™ spherical prepolymerised fillers providing a ball-bearing effect that enables excellent adaptation and sculptability.



The micro-granulated structure of SphereTEC™ is able to bind more free resin compared to usual fillers. Therefore ceram.x<sup>®</sup> does not stick to hand instruments.

<sup>1</sup> VITA<sup>®</sup> is not a registered trademark of Dentsply Sirona  
<sup>2</sup> Note: For best results, it is not recommended to use the new ceram.x<sup>®</sup> duo shades with the original Ceram.X<sup>®</sup> duo<sup>2</sup> material.



# ceram.x<sup>®</sup> duo

## Universal Nano-Ceramic Restorative

**NEW! Unique, SphereTEC™ technology takes ceram.x<sup>®</sup> duo handling to the next level. Spherical pre-polymerized glass fillers provide an enhanced composite handling experience.**

**.xplore the new filler technology**

**Watch now!**



- Excellent cavity adaptation and sculptability
- Improved slump resistance
- Doesn't stick to instruments
- Fast and easy polishing for outstanding esthetics results

## Ordering Information

### ceram.x<sup>®</sup> duo Introductory Kit



**ceram.x<sup>®</sup> duo Compules<sup>®</sup> Tips** **60701316A**  
 42 Compules<sup>®</sup> à 0.25 g  
 (9 x D2, D3, E2, 6 x E3, 3 x D1, D4, E1),  
 Accessories

**ceram.x<sup>®</sup> duo Syringe** **60701350A**  
 7 Syringe à 3 g  
 (shades D1, D2, D3, D4, E1, E2, E3)

### ceram.x<sup>®</sup> duo Refills

Shades

### Compules<sup>®</sup> Tips

16 x 0.25 g each

### Syringe

1 x 3 g each



Dentin D1	<b>60701301A</b>	<b>60701351A</b>
Dentin D2	<b>60701302A</b>	<b>60701352A</b>
Dentin D3	<b>60701303A</b>	<b>60701353A</b>
Dentin D4	<b>60701304A</b>	<b>60701354A</b>
Dentin DB	<b>60701305A</b>	<b>60701355A</b>
Enamel E1	<b>60701307A</b>	<b>60701357A</b>
Enamel E2	<b>60701308A</b>	<b>60701358A</b>
Enamel E3	<b>60701309A</b>	<b>60701359A</b>

**ceram.x<sup>®</sup> duo Shade Guide** **60701565**

For more information visit [www.dentsplysirona.com](http://www.dentsplysirona.com).

Find us on  [www.facebook.com/dentsplysirona.restorative](https://www.facebook.com/dentsplysirona.restorative)

K79200227-02  
 © Dentsply Sirona 11/2017