



Prime&Bond® NT for Composite Nano-Technology Dental Adhesive

 Dentsply
Sirona

Summary of application in the Total Etch Technique



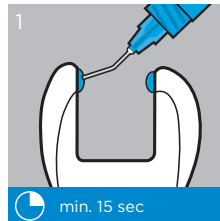
Caution, consult
instructions for use

Preparation:

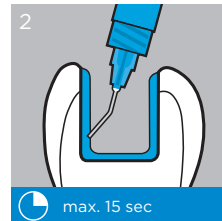
- Clean unprepared cavity surfaces with rubber cup and cleaning paste.
- Clean freshly cut surfaces with water spray.
- Air-dry.

Enamel and dentin pre-treatment

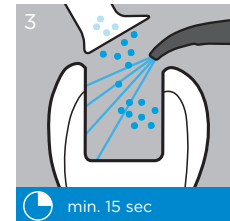
DeTrey®
Conditioner 36



Start etching at enamel margins.



Extend to dentin.



Remove gel and excess water.

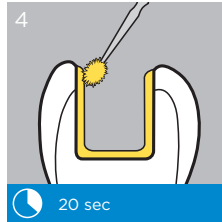
Do not desiccate!



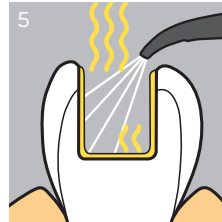
One Layer



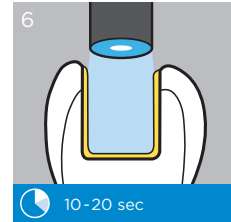
Prime&Bond® NT



Apply ample amounts, leave undisturbed.



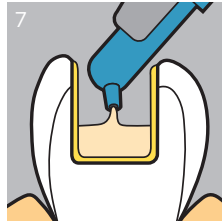
Remove solvent with air-syringe.



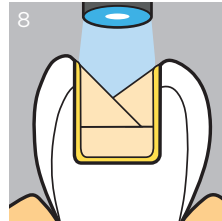
Light cure.
≥ 500 mW/cm² = 20s
≥ 800 mW/cm² = 10s

© 2018 Dentsply Sirona
www.dentsplysirona.com

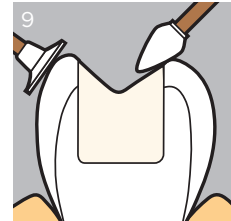
Application with Composites



Place increments.



Light cure each increment.



Polishing can be done immediately.

K107365-05