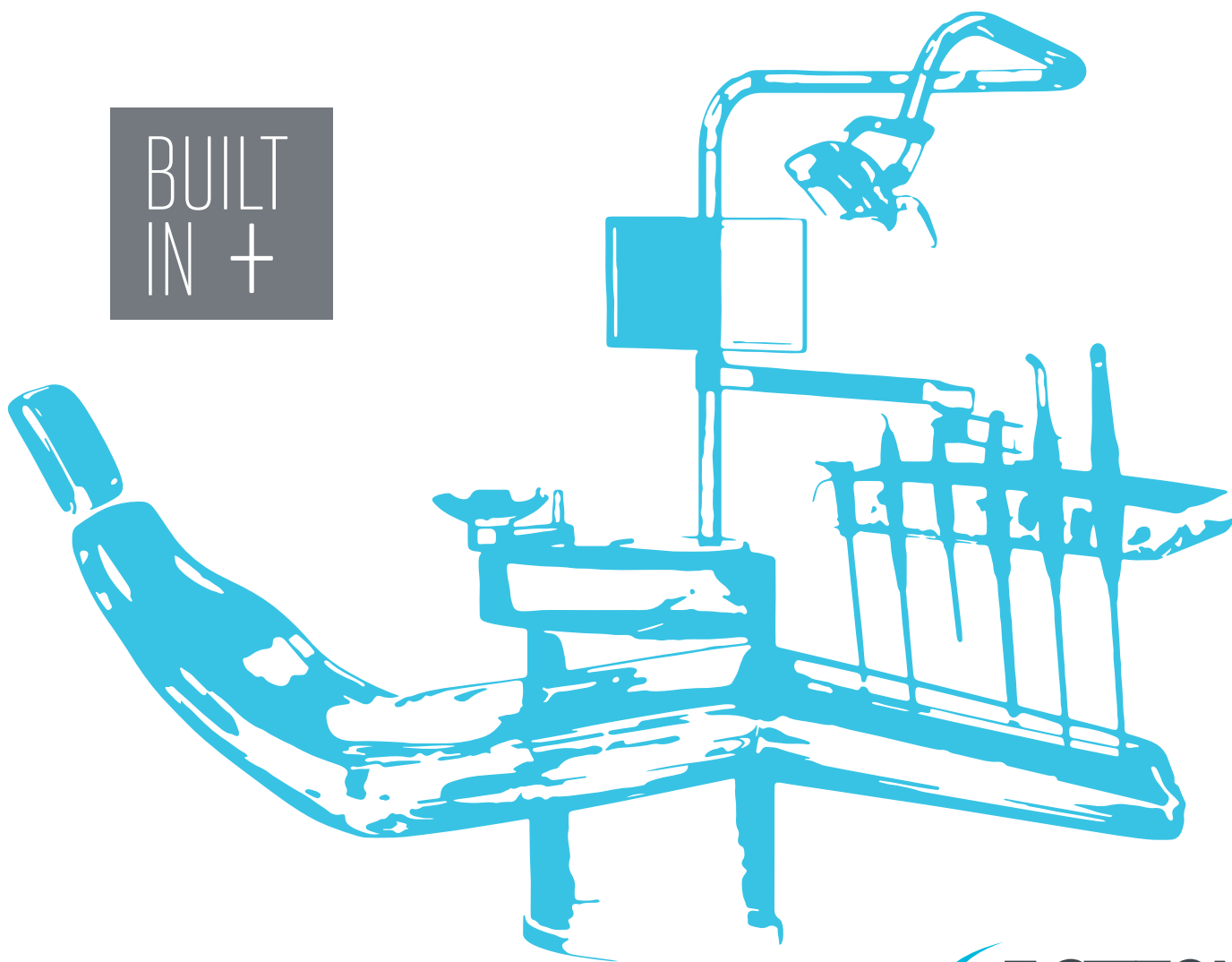




INTEGRATED SOLUTIONS

BUILT
IN +



ACTEON

WHY INTEGRATE?

CLINICAL EXPERTISE

As a major partner for equipping dental chairs, ACTEON® places its technical and clinical expertise at the service of practitioners, from conception to delivery to be always closer to your needs.

FULL RANGE

ACTEON® provides a high-quality and affordable full range of innovative instruments.

LATEST TECHNOLOGY

Ultrasonics, polishers, curing lights, intraoral cameras and disposable air/water syringes.



ULTRASONICS
04

AIR
POLISHER
14

CURING LIGHTS
12

AIR/WATER
SYRINGES
15

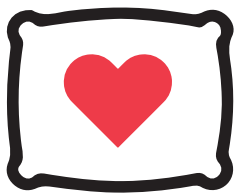
INTRAORAL
CAMERAS
08



ULTRASONICS



NEWTRON MAKE THE SWITCH



COMFORT FOR YOU & YOUR PATIENTS

Very little pressure, with gentle vibrations

- less hand fatigue
- ideal for a wide variety of needs: from sensitive or disabled patients to pediatrics



FASTER TREATMENT TIME

- Treatments 20% to 50% shorter⁽¹⁾
- More time for hygiene education



DON'T GO BACK TO THE STACKS

Magnetostrictive inserts have fragile and temperamental stacks

- If bent or damaged, their power and performance decreases
- Not an issue with NEWTRON® tips or handpiece



LESS HEAT, LESS WATER

- Magnetostrictive stacks create more heat and need more water to cool handpiece, tip and tooth
- Decreased visibility for clinician
- Can cause gagging for patients



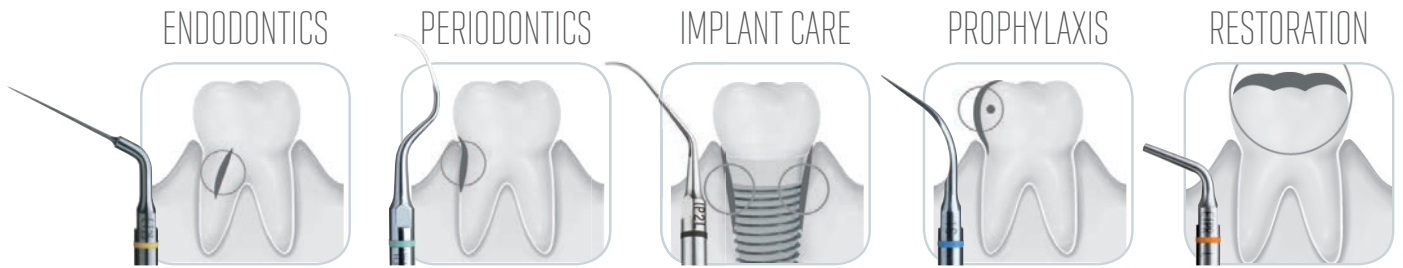
(1) Hayes MJ, Cockrell D, Smith DR. A systematic review of musculoskeletal disorders among dental professionals. *IFDH*. 2009 Aug;(3):159-165



MORE VERSATILITY

NEWTRON® tips are gentle on teeth and have the most applications of any ultrasonic scaler

Over 80 different tips, with exclusive and patented designs, alloys and coatings that won't damage the different surfaces treated.



NEWTRON
TECHNOLOGY

With over 40 years of experience, ACTEON is still the leader in piezo ultrasonics

BUILT
IN +



- Compact and lightweight module for easy installation
- Choice of several ergonomic handpieces that are easily disconnectable and autoclavable
- Cords are light and flexible, with perfect cord/handpiece balance and control during the procedure
- Extremely precise electronic power settings for unbeatable power and performance
- Can be integrated into any delivery system or dental chair

ULTRASONICS



SP NEWTRON MODULE

60x50x33mm / 75x49x33mm (LED)
28-36kHz
0.1 to 12W
Supply Voltage:
24Vac / 30VA; 34Vdc
Settings: analog or digital

SP NEWTRON LED MODULE



STANDARD

Ø 4x6; 5x7; 6x8; 7x10mm



LED

Ø 5x7; 6x8; 7x10mm



SLIM

Ø 4.5x5.6mm



Light



Medium



Dark





NEWTRON STANDARD

Ø20 mm; 52g



NEWTRON LED

LED cold powerful light
Ø 21mm; 73g



NEWTRON SLIM & B.LED

Non LED version available
Highly corrosion resistant (titanium made)
Ø 18mm; 48g
LED cold powerful light
65000 Lux



ACCESS TO ALL ACTEON TIPS



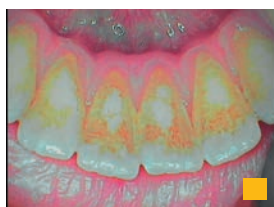
DIAGNOSTIC CAMERAS



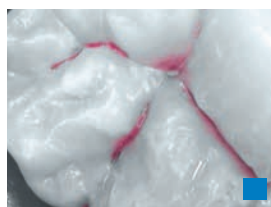
SOPRUCARE

Fluorescence technology highlights gingival inflammation, calculus and plaque

- **PERIO mode:** highlight plaque, calculus, and gingival inflammation
- **CARIO mode:** caries are detected as red, surrounding tissue is displayed in black and white
- **DAYLIGHT mode:** communicate more effectively with your patient and see details that are not visible with the naked eye



PERIO mode



CARIO mode



DAYLIGHT mode



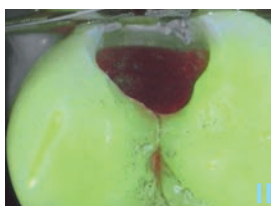
SOPRULIFE

Autofluorescence highlights decay & promotes minimally invasive treatment

- **DIAGNOSTIC aid mode:** identify the development of occlusal and interproximal carious lesions
- **TREATMENT aid mode:** perform minimally invasive treatment by preserving healthy tissue
- **DAYLIGHT mode:** from portrait to macrovision, obtain sharp images with the large depth of field



DIAGNOSTIC mode



TREATMENT mode



DAYLIGHT mode

BUILT
IN +

- Easy integration in all dental chairs
- Several configurations possible (USB, Video)
- Upgradable camera: one dock for all ACTEON cameras

INTRAORAL CAMERAS



SPEAK THE SAME LANGUAGE
AS YOUR PATIENT



SOPRU 717^{FIRST}

Macrovision reveals invisible: magnification up to 115 times

- Reveal micro fractures, infiltrations, lesions, everything that is not visible with the naked eye
- Extremely small camera head for easier access



Cracked tooth



Dental cavity preparation



Infiltrated occlusal



SOPRU 817

Communication: the key to education & case acceptance

- Ease of use: point and shoot
- 105° angle of view for better exploration of distal areas
- Small, rounded shape for easy accessibility and maximum patient comfort
- Fixed focus with large depth of field, providing high-quality images



Intraoral



Intraoral



One tooth

INTRAORAL CAMERAS



NEW MINI DOCK U_USB2

- One digital USB 2.0 output
- 5VDC (from USB port)
- 2.5VA
- 48x48x30mm
- 22g



LINKING CABLE



Several lengths available:
2m - 2.5m - 5m - 7m



STANDARD



Accessories



SHEATHS



SOPROTIPS

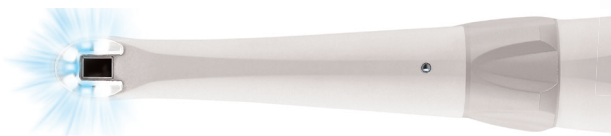
For SOPROLIFE
and SOPROCARE



HANDPIECE HOLDER



A CAMERA FOR EVERY PRACTICE'S NEEDS



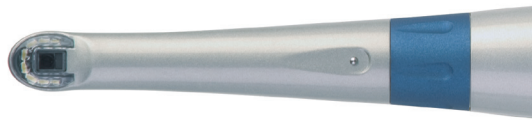
SOPRUCARE

- Focus adjustment: 4 pre-set positions (Extraoral, Intraoral, 1 tooth, Macro)
- Lighting: 7 LED (4 white LED, 3 blue LED)
- 78g



SOPRULIFE

- Focus adjustment: 4 pre-set positions (Extraoral, Intraoral, 1 tooth, Macro)
- Lighting: 4 white LED (white mode), 4 blue LED (blue mode)
- 78g



SOPRU717

- Focus adjustment: 3 pre-set positions (Extraoral, Intraoral, Macro)
- Lighting: 8 LED
- 75g



SOPRU617

- Focus adjustment: Fixed focus
- Lighting: 8 LED
- 55g

	Highlight dental plaque & gingival inflammation	Caries detection	Magnification	Excellent Intraoral images
SOPRUCARE	✓	✓	✓	✓
SOPRULIFE		✓	✓	✓
SOPRU717			✓	✓
SOPRU617				✓

CURING LIGHTS

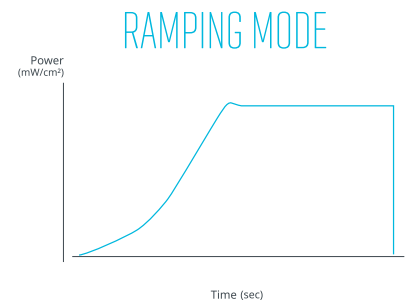
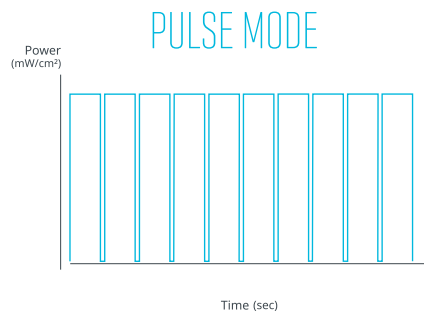
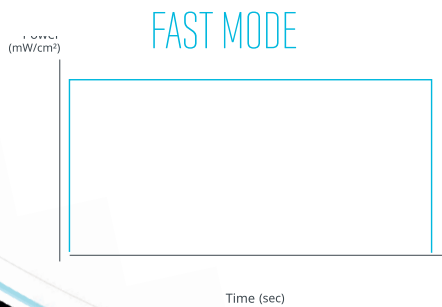
MINILED

FAST CURING FOR LONG TERM ESTHETIC RESULTS



2 REMOVABLE AND AUTOCLAVABLE LIGHT GUIDES

- Ø 7.5mm: large restorations, posterior brackets, inlay cores
- Ø 5.5mm: lingual ortho, interproximal composites, small restorations

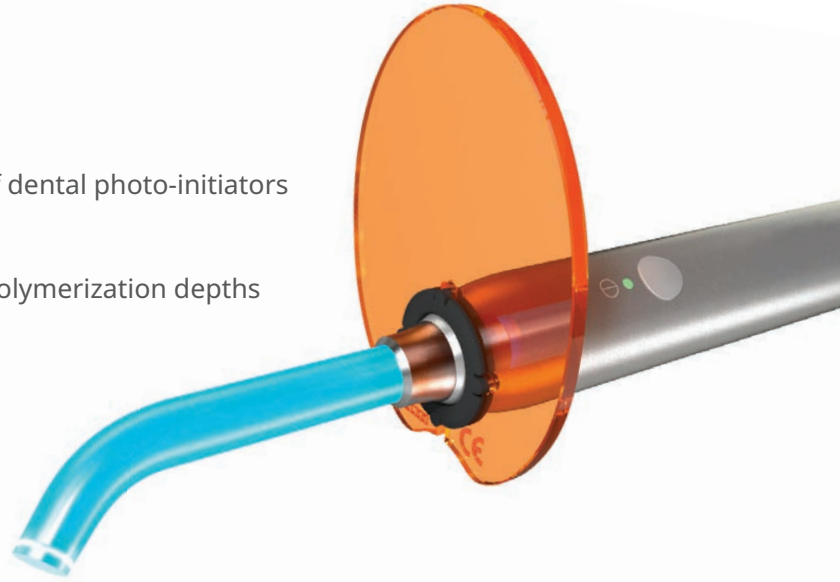


OUTPERFORMS IN POWER, EFFICIENCY & SPEED

- Robust aluminum handpiece
- Light and easy to grip
- Colored light shield for eye protection

High polymerization power

- Wide spectrum of wavelengths to cover the majority of dental photo-initiators
 - Standard and Supercharged 420-480nm
- Large power range (1250mW/cm² - 3000mW/cm²)
- Focused energy and customizable modes for various polymerization depths



BUILT
IN +

EASY INSTALLATION

- All MiniLED™ use one single module with compact size, for easy integration and upgrades
- Various handpiece cords, shades and accessories



72x45x32mm
Supply 24Vac / 20VA



Ø 4x6 ; 5x7mm
Colors



MiniLED Standard
Power: 1,250 - 2,000mW/cm²
Spectrum: 420 - 480nm



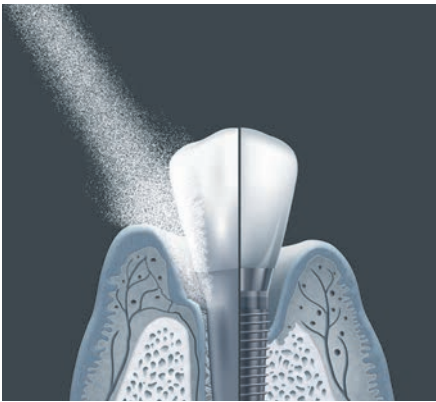
MiniLED Supercharged
Power: 2,000 - 3,000mW/cm²
Spectrum: 420 - 480nm

AIR POLISHER



air N GO
easy

ALL-IN-ONE AIR POLISHER



DUAL FUNCTIONS

- "SUPRA function" for supragingival polishing and stain removal
- "PERIO function" for sub-gingival polishing, periodontal maintenance and peri-implant treatments



4 NOZZLES FOR TREATMENT

AIR-N-GO Nozzles provide continuous, accurate and controlled spray. These nozzles offer power and efficiency for the removal of supra and subgingival biofilm.

- Sodium bicarbonate-based "CLASSIC" powders
- Calcium carbonate-based "PEARL" powder
- Glycine-based "PERIO" powder



100% natural aromas or essential oils

A single handpiece to cover a range of care and treatment

- Fast start-up: direct connection to the high speed handpiece connector
- 360° swivel handpiece for fast and accurate treatment
- Parts can be dismantled for easy cleaning
- Quick-connect adapters to fit almost any handpiece adapter

HYGIENE

Ris|Kontrol[®]
 Disposable tips for a air-water syringe

REDUCE THE RISK OF CROSS-CONTAMINATION

FLEXIBLE

Easy to bend for better access

ECONOMICAL

Saves time (no need for cleaning/disinfection/sterilization/
 traceability)

SAFE

- Reduced risk of direct or cross-contamination
- No risk of ingestion: safety-locking device

DRY AIR

Two separate tubes guide air and water from the syringe
 to the end of the tip

UNIVERSAL

- Adapters** available for any type of equipment
- Adapters in anodized aluminum, propylux,
 stainless steel or resin, very easy to screw or clip
 onto any syringe

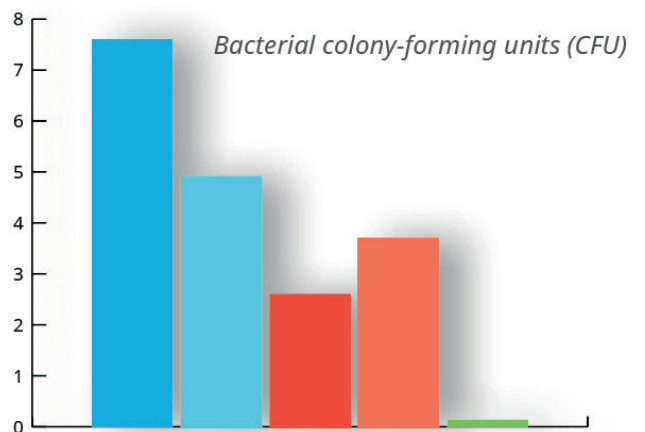


** Class I medical devices



***Sterilization of syringes is not
 completely effective!***

***Only disposable syringe tips like
 RISKONTROL[®] provide the best
 protection.***



- New non-disposable tip, non-flushed (n=17)
- New non-disposable tip, flushed (n=17)
- Used sterilizable tip, non-flushed (n=17)
- Used sterilizable tip, flushed (n=17)
- Riskontrol (n=17)

www.acteongroup.com



acteongroup.com/us | info@acteonusa.com | 800-289-6367